

紙ランタン (ちょうちん) PAPER LANTERN

用意するもの MATERIALS:

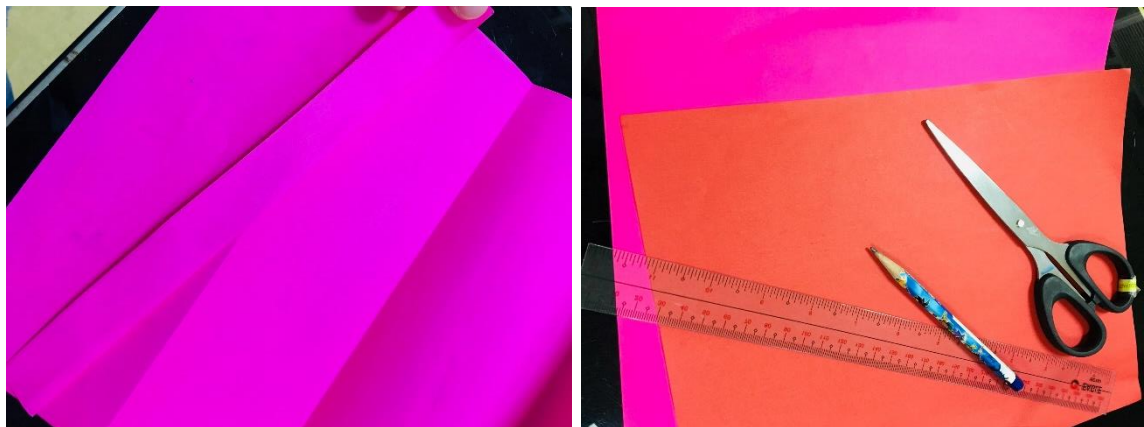
- 好きな色のいろがみ (色画用紙) 2枚 Any two (2) colored papers
- はさみ Scissors
- じょうぎ Ruler
- 色ペン/クレヨン Coloring pen/ crayons
- のり Glue
- えんぴつ Pencil

作り方 INSTRUCTIONS:

1. 持ち手を作る

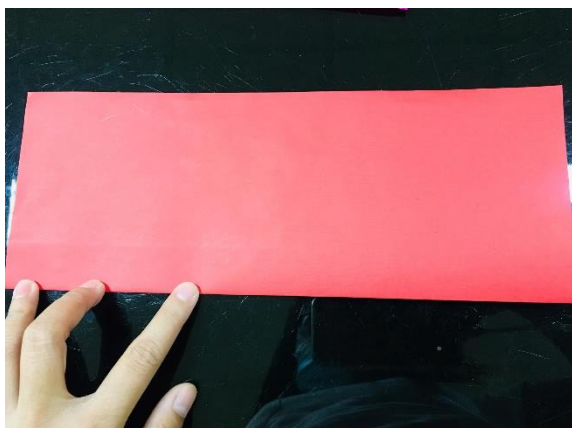
A4 サイズまたは長方形のいろがみを 1 枚用意して、2.5 cm (約 1 インチ) 幅に 1 枚切る

Prepare the colored paper. Start out with an A4, Letter size, or any rectangular sheet of paper. Make the handle. Cut a 1-inch wide strip off on one short side. Set this aside for the handle.



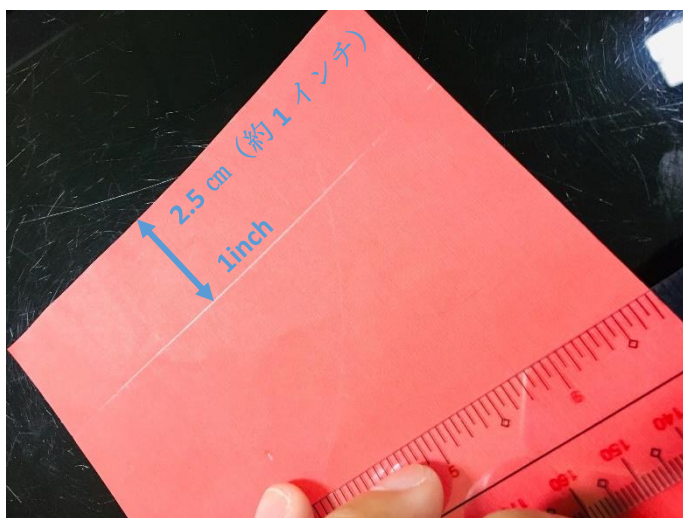
2. 縦に紙を半分に折る

Fold the paper in half, lengthwise.



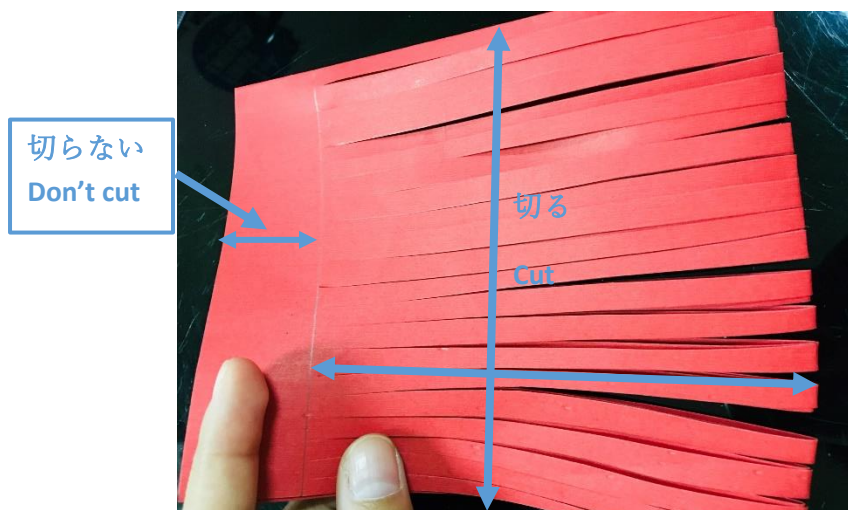
3. 折った部分の反対側に端から 2.5 cm (約 1 インチ) 測って線を引く。

Draw a horizontal line in one inch from the long edge opposite the fold. This line is just a guide for cutting and may not be necessary for more mature crafters.



4. 折った部分から線を引いたところまで細く切る。

Cut the first slit. Starting from the folded edge, cut a straight line about an inch from one short edge, all the way to the horizontal line. Cut more slits. Continue to cut more straight lines about 1 inch apart until you reach the opposite short edge of the paper. Remember that the horizontal line marks the point where you stop cutting each straight line.



5. 紙を開くと真ん中から均等に垂直の細い線ができる（写真のように）。③で書いたえんぴつの線を消す。

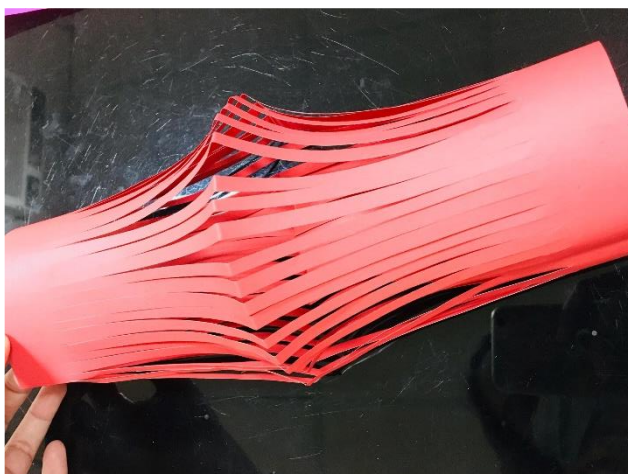
Unfold the paper. The paper will have several vertical slits along the middle. Erase any pencil marks or re-fold the crease the opposite way to hide the pencil marks at the back.



6. ランタンを作る

⑤の紙をひっくり返し、写真のように細い線が広がるように丸め、端・1 cm（約2分の1インチ）をのりでとめる

Form the paper into lantern. Transform the paper into a lantern by forming it into a tube shape. Overlap the long edges at least ½ inch. Staple or tape at the top and bottom of the overlap.



7. ①で作った持ち手を⑥で作ったランタンの上部のうち側にのりでつける。お好みで持ち手をデコレーションしても良い。

Glue the handle. Take the paper handle you made in Step 2. Glue the ends on the inside of the lantern's top edge. Decorate the handle if you like.



ほら、見て！！ Voila!!!

